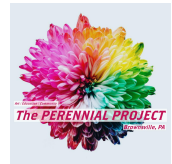


In partnership with:



Autodesk

Snowdon Towers

An Autodesk Revit sample project

Brownsville, PA

Previously on this site:



Project Location:



GIS Coordinate System: PA81 1P
46.82271788, -79.8846472

How to use this project:

This is the: **Snowdon Towers Sample Architectural.rvt** model

This project is distributed across several Revit models in keeping with industry standard best practices. If you wish to view the entire project, you can open each model individually or you can link them all together. You will find all models in the same folder.

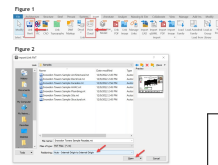
The models included are:
Snowdon Towers Sample Architectural.rvt
Snowdon Towers Sample Site.rvt
Snowdon Towers Sample Structure.rvt
Snowdon Towers Sample Mechanical.rvt
Snowdon Towers Sample Plumbing.rvt
Snowdon Towers Sample HVAC.rvt
Snowdon Towers Sample Electrical.rvt
Brownsville.rvt (Point Cloud)

All models use the same coordinate system and are stored in the same folder by default. When templates have been saved and applied to these models the models will help ensure that geometry displays correctly both in your host model and any linked models.

To attach a link, do the following:

1. Open a host view (e.g., Level Plan L1).
2. Click the Insert tab of the ribbon.
3. Click the Link Model (or Point Cloud) button. (Figure 1)
4. Select the file that you wish to link.
5. Ensure that Publishing is set to Auto - Internal Origin to Internal Origin and then click Open. (Figure 2)

(Alternatively, you can choose: Auto - By Shared Coordinates. This is optional as all files use the same internal origin.)



To learn more about this project, visit Sheet G001.

NOT FOR CONSTRUCTION

Sheet Index	
Sheet Number	Sheet Name
G001	General
G002	Learn about the project
G003	Project Data - Site Safety Plan
G004	First Floor Life Safety Plan
G005	Second Floor Life Safety Plan
G006	Third Floor Life Safety Plan
G007	Fourth Floor Life Safety Plan
G008	Fifth Floor Life Safety Plan
G009	Sixth Floor Life Safety Plan
G010	Roof Deck Floor Plan
G011	Roof Plan
G012	Roof Deck Floor Plan
G013	First Floor Plan
G014	Second Floor Plan
G015	Third Floor Plan
G016	Fourth Floor Plan
G017	Fifth Floor Plan
G018	Sixth Floor Plan
G019	Roof Deck Plan
G020	Roof Plan
G021	First Floor Ceiling Plan
G022	Second Floor Ceiling Plan
G023	Third Floor Ceiling Plan
G024	Fourth Floor Ceiling Plan
G025	Fifth Floor Ceiling Plan
G026	Sixth Floor Ceiling Plan
G027	Roof Deck Ceiling Plan
G028	Roof Plan
G029	Building Sections
G030	Building Sections
G031	Building Sections
G032	Building Sections
G033	Building Sections
G034	Building Sections
G035	Building Sections
G036	Building Sections
G037	Building Sections
G038	Building Sections
G039	Building Sections
G040	Building Sections
G041	Building Sections
G042	Building Sections
G043	Building Sections
G044	Building Sections
G045	Building Sections
G046	Building Sections
G047	Building Sections
G048	Building Sections
G049	Building Sections
G050	Building Sections
G051	Building Sections
G052	Building Sections
G053	Building Sections
G054	Building Sections
G055	Building Sections
G056	Building Sections
G057	Building Sections
G058	Building Sections
G059	Building Sections
G060	Building Sections
G061	Building Sections
G062	Building Sections
G063	Building Sections
G064	Building Sections
G065	Building Sections
G066	Building Sections
G067	Building Sections
G068	Building Sections
G069	Building Sections
G070	Building Sections
G071	Building Sections
G072	Building Sections
G073	Building Sections
G074	Building Sections
G075	Building Sections
G076	Building Sections
G077	Building Sections
G078	Building Sections
G079	Building Sections
G080	Building Sections
G081	Building Sections
G082	Building Sections
G083	Building Sections
G084	Building Sections
G085	Building Sections
G086	Building Sections
G087	Building Sections
G088	Building Sections
G089	Building Sections
G090	Building Sections
G091	Building Sections
G092	Building Sections
G093	Building Sections
G094	Building Sections
G095	Building Sections
G096	Building Sections
G097	Building Sections
G098	Building Sections
G099	Building Sections
G100	Building Sections

Project Management & Architectural Modeling: Cartesian Inverse, PA Chicago, IL 28246	Architectural Design: Etienne Oiseau, LLC Detroit, MI 96435	Structural Design and Modeling: Safe Harbor Engineering, PC 11 Eleventh Street, Suite 11 Purchasing Decisions, NO 13131-1255	MEP Design and Modeling: Droffats Consulting Services, LLC Los Angeles, CA 78383	Civil Engineering: Rubicon Engineering Solutions, INC Pittsburgh, PA 77462-5247	Landscape Architecture & Community Planning: Dagny Taggart, LTD Brownsville, PA 52872	Commercial Kitchen Design: Designing Trends 103B Broadway Knoxville, TN 36664-2084	Project Number Date 7765328-33-A 6/11/2023 AUTODESK
---	--	--	---	--	--	--	--

Architectural

Check after content is reviewed

Thank you for exploring the
Autodesk Revit® sample project

Special thanks to
point cloud and

Program:

Page 1

The building skin is highly insulated and passive house concepts formed the inspiration for the mechanical systems.

Source: <http://www.fox.com>

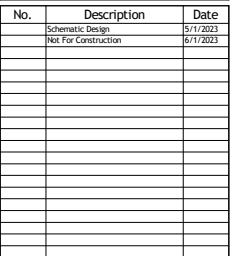
All models use the same coordinate system and are stored in the same folder by default. View templates have been saved and applied to views within the models to help ensure that geometry displays correctly both in your host model and any linked models.

- Page 2

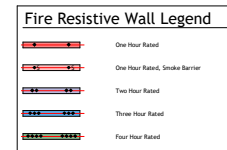
Here are some of the main Revit features that you will see showcased in this project:

- Page 2

The schedule view named: **How do I** lists all help topics in order from simple to more complex. You can use this view as a "guided tour" to visit all the help topics in sequence and check them off as you explore the project.

Page 1

1/14/2025 2:18:08 PM



www.autodesk.com/revit

Project Management & Architectural Modeling:
Cartesian Inverse, PA
Chicago, IL 28246

Architectural Design:

Etienne Oiseau, LLC
Detroit, MI 96435

Structural Design and Modeling:

Safe Harbor Engineering, PC
11 Eleventh Street, Suite 11
Purchasing Decisions, NO 13131-1525

MEP Design and Modeling:

Droffats Consulting Services, LLC
Los Angeles, CA 78383

Civil Engineering:

Rubicon Engineering Solutions, INC
Pittsburgh, PA 77462-5247

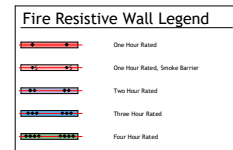
Landscape Architecture & Community Planning:

Dagny Taggart, LTD
Brownsville, PA 52872

Commercial Kitchen Design:

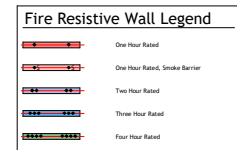
Designing Trends
103B Broadway
Knoxville, TN 36664-2084

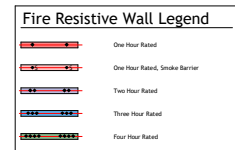
Scale $1/8" = 1'-0"$



www.autodesk.com/revit

1/14/2025 2:19:10 PM





www.autodesk.com/revit

NOT FOR CONSTRUCTION





www.autodesk.com/revit



Project Management & Architectural Modeling:
Cartesian Inverse, PA
Chicago, IL 28246

Architectural Design:
Etienne Oiseau, LLC
Detroit, MI 96435

Structural Design and Modeling:
Safe Harbor Engineering, PC
11 Eleventh Street, Suite 11
Purchasing Decisions, NO 13131-1525

MEP Design and Modeling:
Droffats Consulting Services, LLC
Los Angeles, CA 78383

Civil Engineering:
Rubicon Engineering Solutions, INC
Pittsburgh, PA 77462-5247

Dagny Taggart, LTD
Brownsville, PA 52872

Commercial Kitchen Design:
Designing Trends
103B Broadway
Knoxville, TN 36664-2084

[illegible]

Snowdon Towers

Site Plan

Project Number	7765328-33-A
----------------	--------------

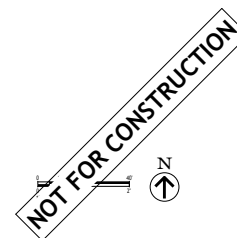
Date	6/1/2023
------	----------

Drawn By APF

Checked By	ADSK
------------	------

C101

Scale $1'' = 20'-0''$





Architectural Design:
Etienne Oiseau, LLC
Detroit, MI 96435

Structural Design and Modeling:
Safe Harbor Engineering, PC
11 Eleventh Street, Suite 11
Purchasing Decisions, NO 13131-1525

MEP Design and Modeling:
Droffats Consulting Services, LLC
Los Angeles, CA 78383

Civil Engineering:
Rubicon Engineering Solutions, INC
Pittsburgh, PA 77462-5247

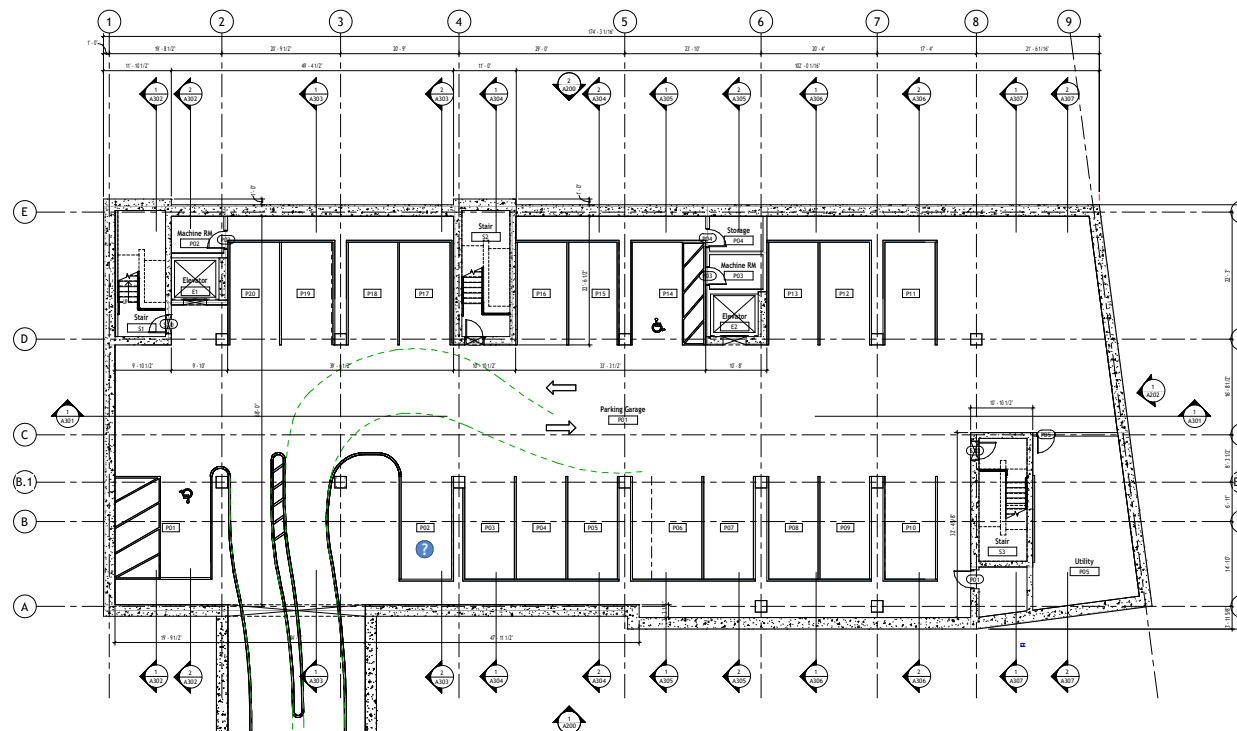
Landscape Architecture & Community Planning:
Dagny Taggart, LTD
Brownsville, PA 52872

Designing Trends
103B Broadway
Knoxville, TN 36664-2084

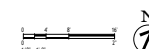
[illegible]

Project Number	7765328-33-A
Date	6/1/2023
Drawn By	APF
Checked By	ADSK

Scale $1/8" = 1'-0"$



Parking Schedule				
Type	Mark	Description	Count	Comments
Parking				
P90		P x 18 - 90 dog	13	
P90		P x 12 (4 Aides)	1	
P90		P x 18 (8 Aides)	1	
Grand Total: 30				



NOT FOR CONSTRUCTION



Architectural Design:
Etienne Oiseau, LLC
Detroit, MI 96435

Structural Design and Modeling:
Safe Harbor Engineering, PC
11 Eleventh Street, Suite 11
Purchasing Decisions, NO 13131-1525

MEP Design and Modeling:
Droffats Consulting Services, LLC
Los Angeles, CA 78383

Civil Engineering:
Rubicon Engineering Solutions, INC
Pittsburgh, PA 77462-5247

Landscape Architecture & Community Planning:
Dagny Taggart, LTD
Brownsville, PA 52872

Designing Trends
103B Broadway
Knoxville, TN 36664-2084

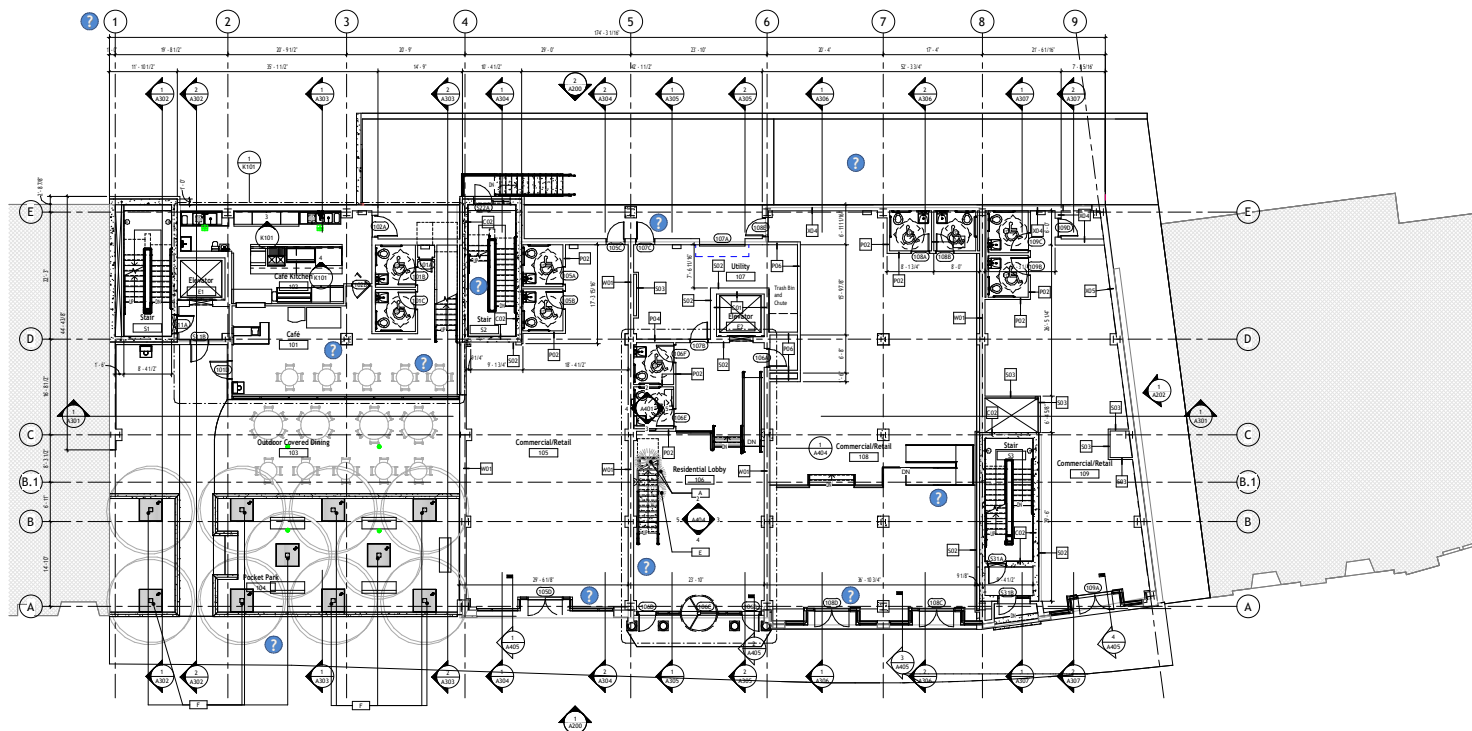
[illegible]




Snowdon Towers
First Floor Plan

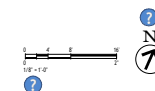
Project Number	7765328-33-A
Date	6/1/2023
Drawn By	APF
Checked By	ADSK

A101

Scale $1/8" = 1'-0"$



Planting Schedule				
Type Mark	Type	Count	Level	Family Thumbnail
BPC Strals				
A	Hydrangea 3' F	2	L1 - Block 3f	
C	Gambay 1' 1/2'	1	L1 - Block 3f	
Tree - Honey Locust				
	10' Canopy	10	L1 - Block 3f	
Grand total: 14				



NOT FOR CONSTRUCTION



Architectural Design:
Etienne Oiseau, LLC
Detroit, MI 96435

Safe Harbor Engineering, PC
11 Eleventh Street, Suite 11
Purchasing Decisions: NO 13131-1525

MEP Design and Modeling:
Droffats Consulting Services, LLC
Los Angeles, CA 78383

Civil Engineering:
Rubicon Engineering Solutions, INC
Pittsburgh, PA 77462-5247

Dagny Taggart, LTD
Brownsville, PA 52872

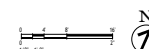
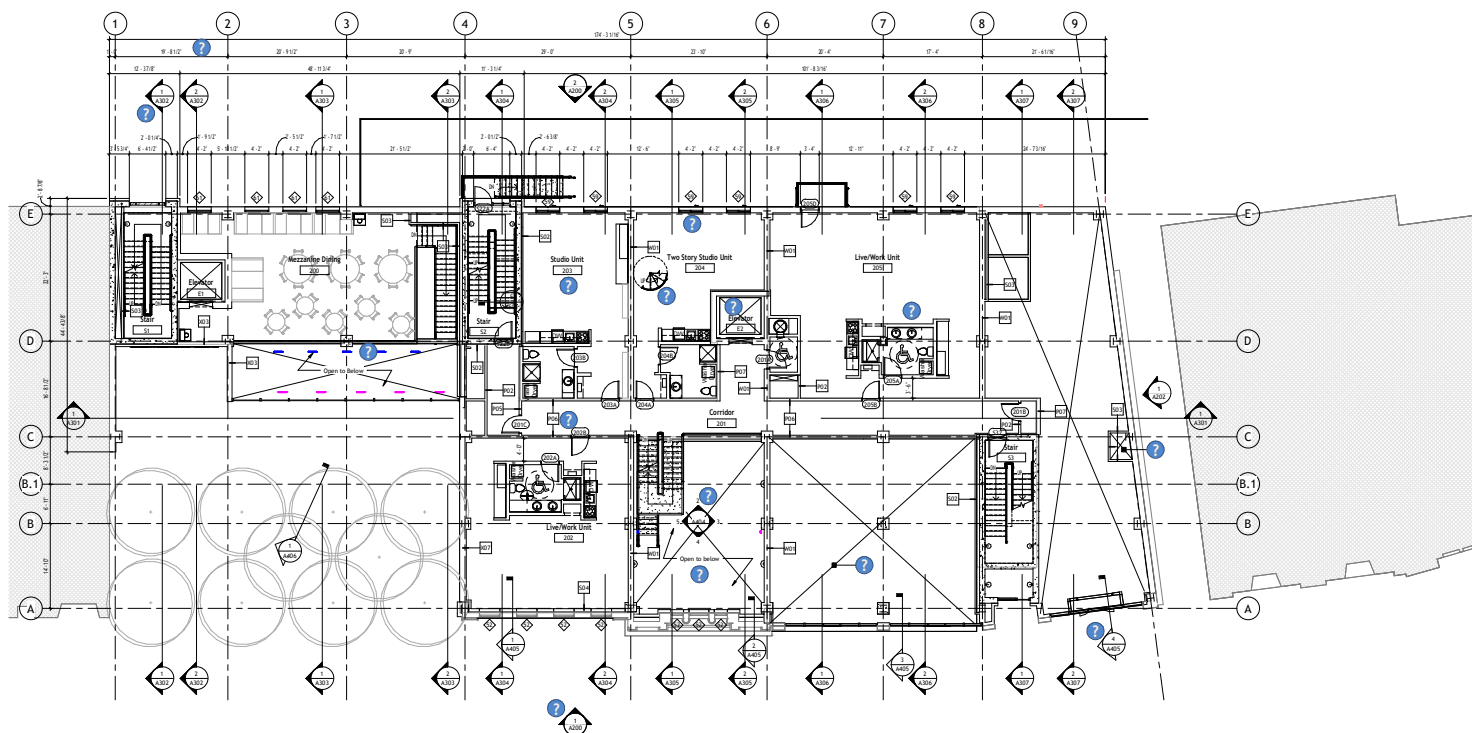
Designing Trends
103B Broadway
Knoxville, TN 36664-2084

[illegible]

Snowdon Towers
Second Floor Plan

Checked By	ADSK
------------	------

Scale $1/8" = 1'-0"$

[illegible]

NOT FOR CONSTRUCTION



Architectural Design:
Etienne Oiseau, LLC
Detroit, MI 96435

Structural Design and Modeling:
Safe Harbor Engineering, PC
11 Eleventh Street, Suite 11
Purchasing Decisions, NO 13131-1525

MEP Design and Modeling:
Droffats Consulting Services, LLC
Los Angeles, CA 78383

Civil Engineering:
Rubicon Engineering Solutions, INC
Pittsburgh, PA 77462-5247

Dagny Taggart, LTD
Brownsville, PA 52872

Designing Trends
103B Broadway
Knoxville, TN 36664-2084

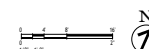
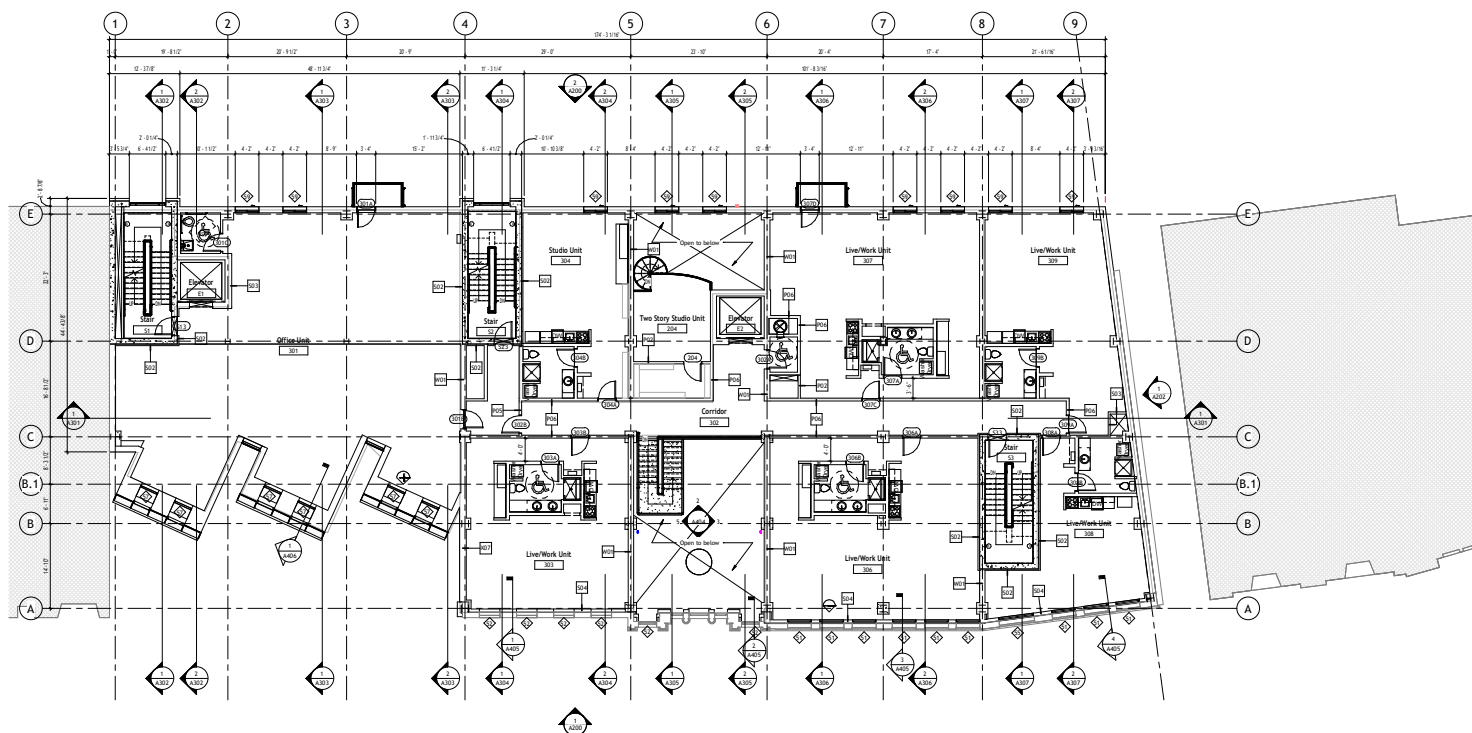
[illegible]

Snowdon Towers
Third Floor Plan

Project Number	7765328-33-A
Date	6/1/2023
Drawn By	APF
Checked By	ADSK

A103

Scale $1/8" = 1'-0"$



NOT FOR CONSTRUCTION



Architectural Design:
Etienne Oiseau, LLC
Detroit, MI 96435

Structural Design and Modeling:
Safe Harbor Engineering, PC
11 Eleventh Street, Suite 11
Purchasing Decisions, NO 13131-1525

MEP Design and Modeling:
Droffats Consulting Services, LLC
Los Angeles, CA 78383

Civil Engineering:
Rubicon Engineering Solutions, INC
Pittsburgh, PA 77462-5247

Dagny Taggart, LTD
Brownsville, PA 52872

Designing Trends
103B Broadway
Knoxville, TN 36664-2084

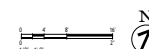
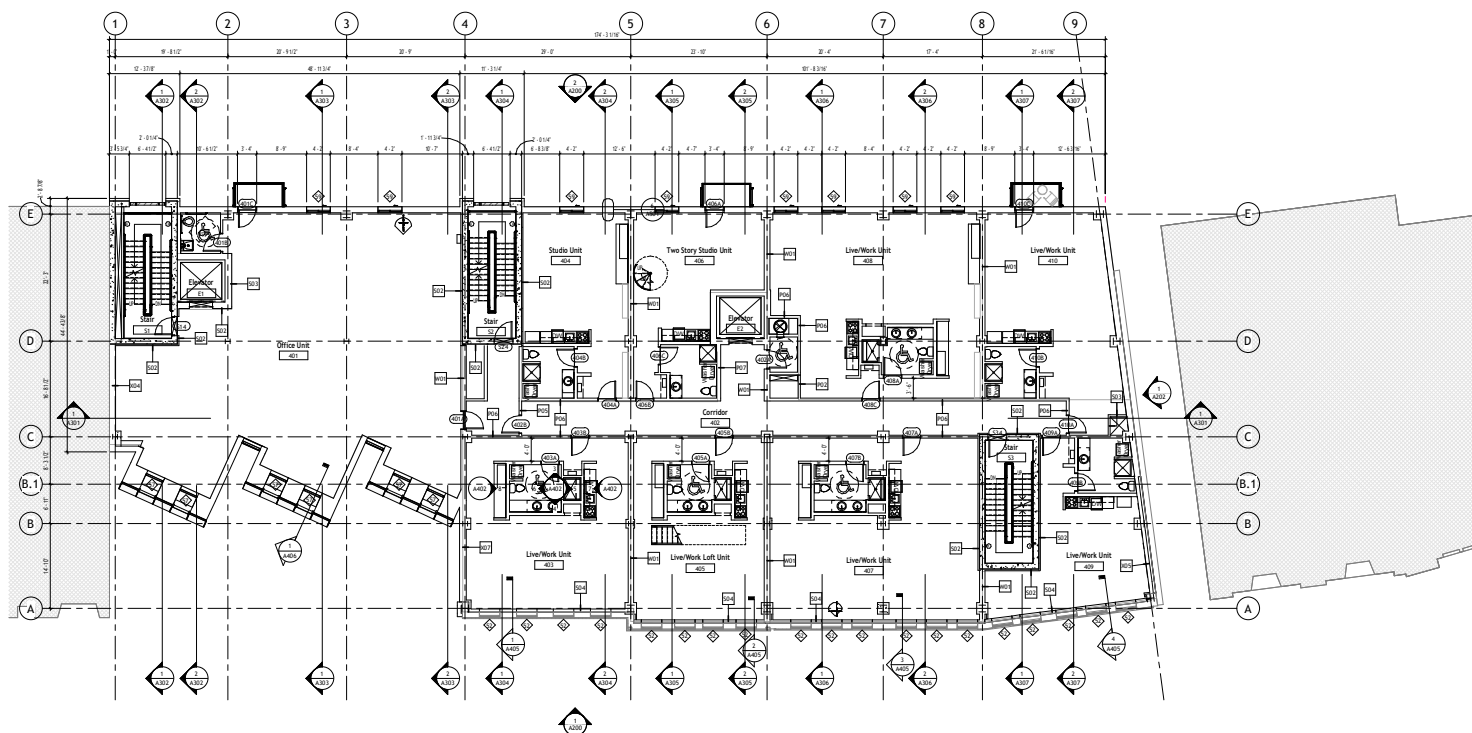
[illegible]

Snowdon Towers
Fourth Floor Plan

Project Number	7765328-33-A
Date	6/1/2023
Drawn By	APF
Checked By	ADSK

A104

Scale $1/8" = 1'-0"$

[illegible]

NOT FOR CONSTRUCTION



Architectural Design:
Etienne Oiseau, LLC
Detroit, MI 96435

Structural Design and Modeling:
Safe Harbor Engineering, PC
11 Eleventh Street, Suite 11
Purchasing Decisions, NO 13131-1525

MEP Design and Modeling:
Droffats Consulting Services, LLC
Los Angeles, CA 78383

Civil Engineering:
Rubicon Engineering Solutions, INC
Pittsburgh, PA 77462-5247

Landscape Architecture & Community Planning:
Dagny Taggart, LTD
Brownsville, PA 52872

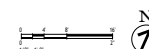
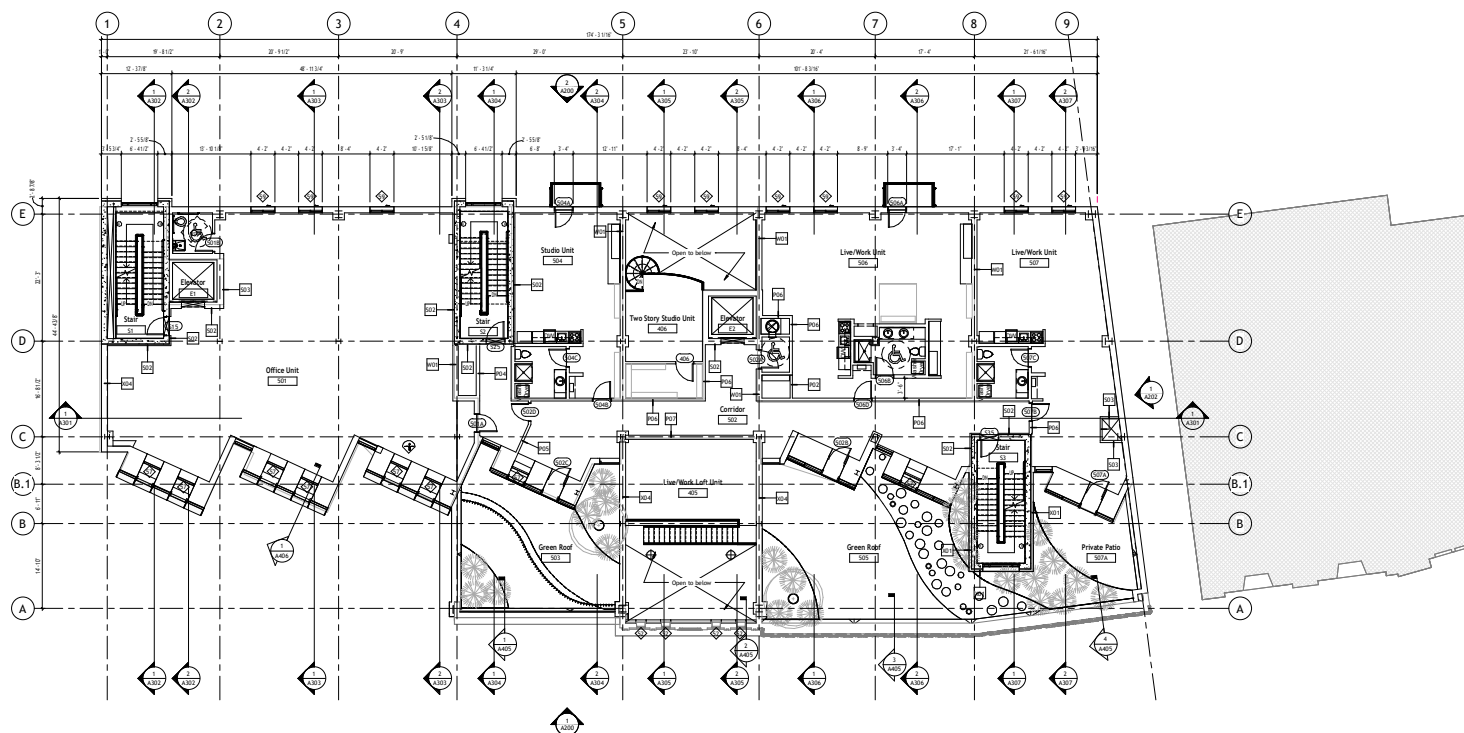
Designing Trends
103B Broadway
Knoxville, TN 36664-2084

[illegible]

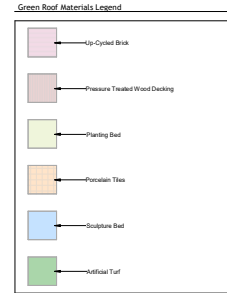
Snowdon Towers
Fifth Floor Plan






Checked By	ADSK
------------	------

Scale $1/8" = 1'-0"$



NOT FOR CONSTRUCTION



Planting Schedule						
Type	Mark	Type	Count	Level	Family	Thumbnail
C		Waterlogged 5'0"	4	Green Roof Hardscape		
B		Swampgrass 4'0"	5	33		
B		Swampgrass 4'0"	18	Green Roof Hardscape		
Total - Money Lost						
B		15' Canopy	1	33		
B		15' Canopy	1	42		

Grand total = 314

NOT FOR CONSTRUCTION

[illegible]

Project Number	7765328-33-A
Date	6/1/2023
Drawn By	APF
Checked By	ADSK
<div style="font-size: 48pt; font-weight: bold;">A106</div>	
Scale	1/8" = 1'-0"



Architectural Design:
Etienne Oiseau, LLC
Detroit, MI 96435

Safe Harbor Engineering, PC
11 Eleventh Street, Suite 11
Purchasing Decisions: NO 13131-1525

MEP Design and Modeling:
Droffats Consulting Services, LLC
Los Angeles, CA 78383

Civil Engineering:
Rubicon Engineering Solutions, INC
Pittsburgh, PA 77462-5247

Dagny Taggart, LTD
Brownsville, PA 52872

Commercial Kitchen Design:
Designing Trends
103B Broadway
Knoxville, TN 36664-2084

[illegible]

Roof Plan

A107

Scale $1/8" = 1'-0"$

[illegible]

NOT FOR CONSTRUCTION



www.autodesk.com/revit

Project Management & Architectural Modeling:
Cartesian Inverse, PA
Chicago, IL 28246

Architectural Design:

Etienne Oiseau, LLC
Detroit, MI 96435

Structural Design and Modeling:

Safe Harbor Engineering, PC
11 Eleventh Street, Suite 11
Purchasing Decisions, NO 13131-1525

MEP Design and Modeling:

Droffats Consulting Services, LLC
Los Angeles, CA 78383

Civil Engineering:

Rubicon Engineering Solutions, INC
Pittsburgh, PA 77462-5247

Landscape Architecture & Community Planning:

Dagny Taggart, LTD
Brownsville, PA 52872

Commercial Kitchen Design:

Designing Trends
103B Broadway
Knoxville, TN 36664-2084

[illegible]

NOT FOR CONSTRUCTION

First Floor Ceiling
Plan

Project Number	7765328-33-A
----------------	--------------

Project Number:	7705528-55-A
Date	6/1/2023

Drawn By	APF
----------	-----

Checked By	ADSK
------------	------

A108

Scale $1/8" = 1'-0"$

[illegible]



Architectural Design:
Etienne Oiseau, LLC
Detroit, MI 96435

Safe Harbor Engineering, PC
11 Eleventh Street, Suite 11
Purchasing Decisions, NO 13131-1525

MEP Design and Modeling:
Droffats Consulting Services, LLC
Los Angeles, CA 78383

Civil Engineering:
Rubicon Engineering Solutions, INC
Pittsburgh, PA 77462-5247

Dagny Taggart, LTD
Brownsville, PA 52872

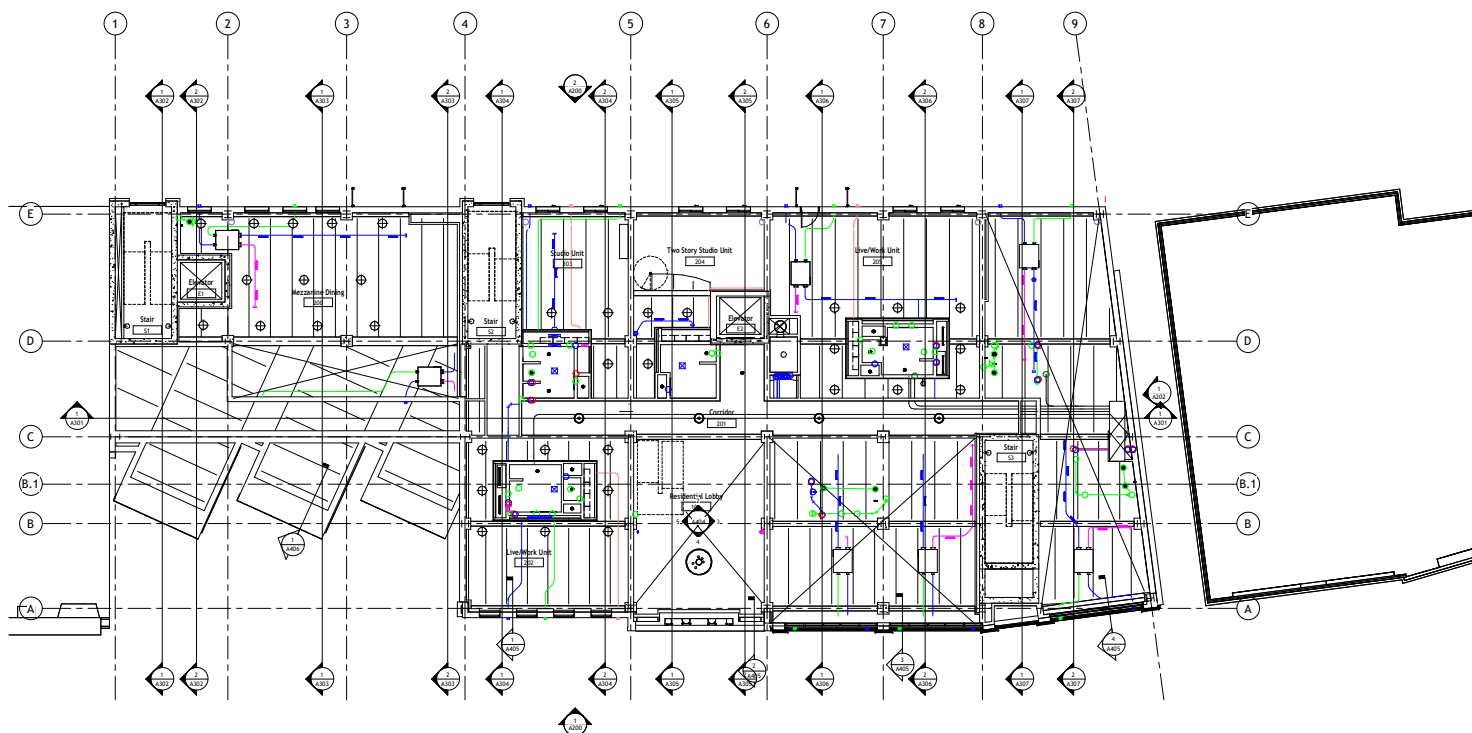
Commercial Kitchen Design:
Designing Trends
 103B Broadway
 Knoxville, TN 36664-2084

[illegible]

Project Number	7765328-33-A
Date	6/1/2023
Drawn By	APF
Checked By	ADSK

A109

Scale $1/8" = 1'-0"$

[illegible]

NOT FOR CONSTRUCTION



Architectural Design:
Etienne Oiseau, LLC
Detroit, MI 96435

Safe Harbor Engineering, PC
11 Eleventh Street, Suite 11
Purchasing Decisions: NO 13131-1525

MEP Design and Modeling:
Droffats Consulting Services, LLC
Los Angeles, CA 78383

Civil Engineering:
Rubicon Engineering Solutions, INC
Pittsburgh, PA 77462-5247

Dagny Taggart, LTD
Brownsville, PA 52872

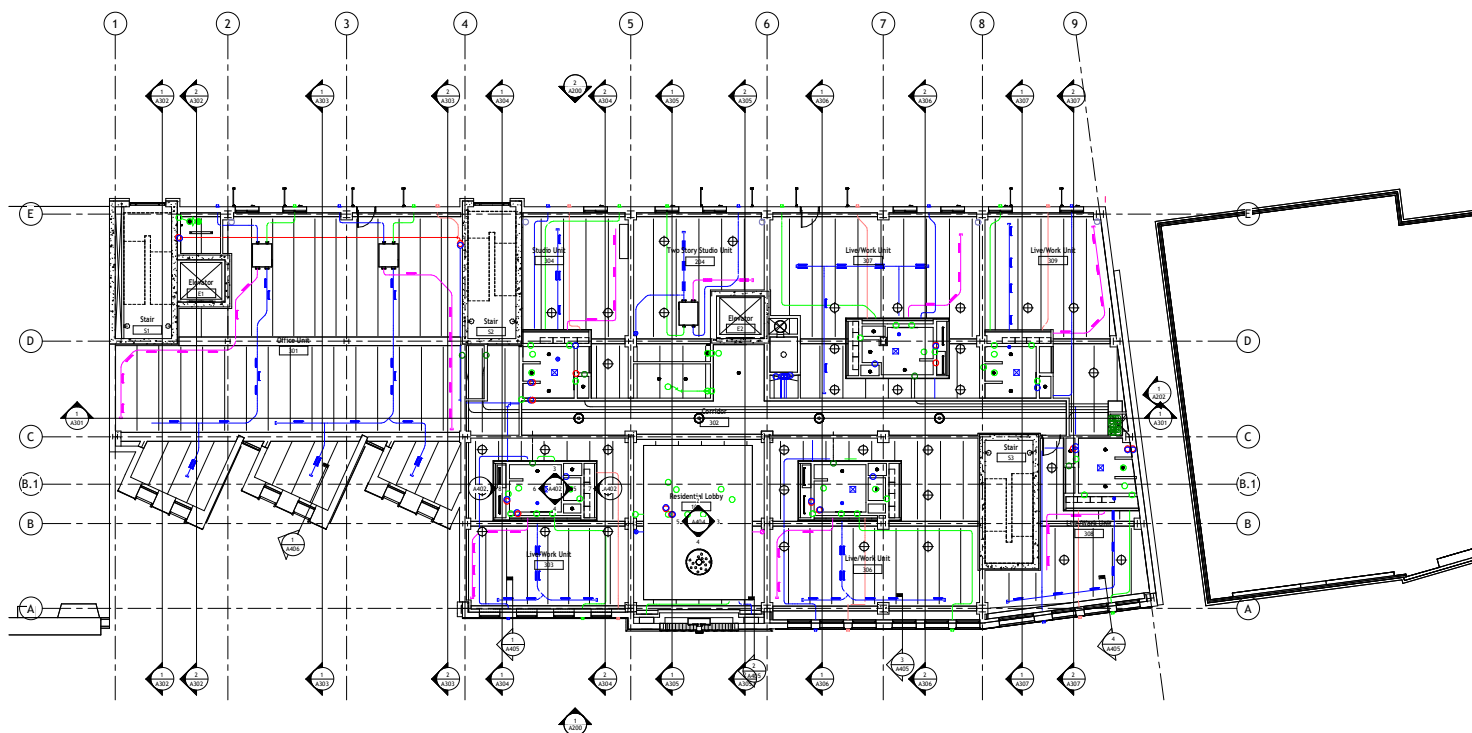
Commercial Kitchen Design:
Designing Trends
 103B Broadway
 Knoxville, TN 36664-2084

[illegible]

Third Floor Ceiling
Plan

Checked By	ADSK
------------	------

Scale $1/8" = 1'-0"$

[illegible]

NOT FOR CONSTRUCTION



Architectural Design:
Etienne Oiseau, LLC
Detroit, MI 96435

Safe Harbor Engineering, PC
11 Eleventh Street, Suite 11
Purchasing Decisions: NO 13131-1525

MEP Design and Modeling:
Droffats Consulting Services, LLC
Los Angeles, CA 78383

Civil Engineering:
Rubicon Engineering Solutions, INC
Pittsburgh, PA 77462-5247

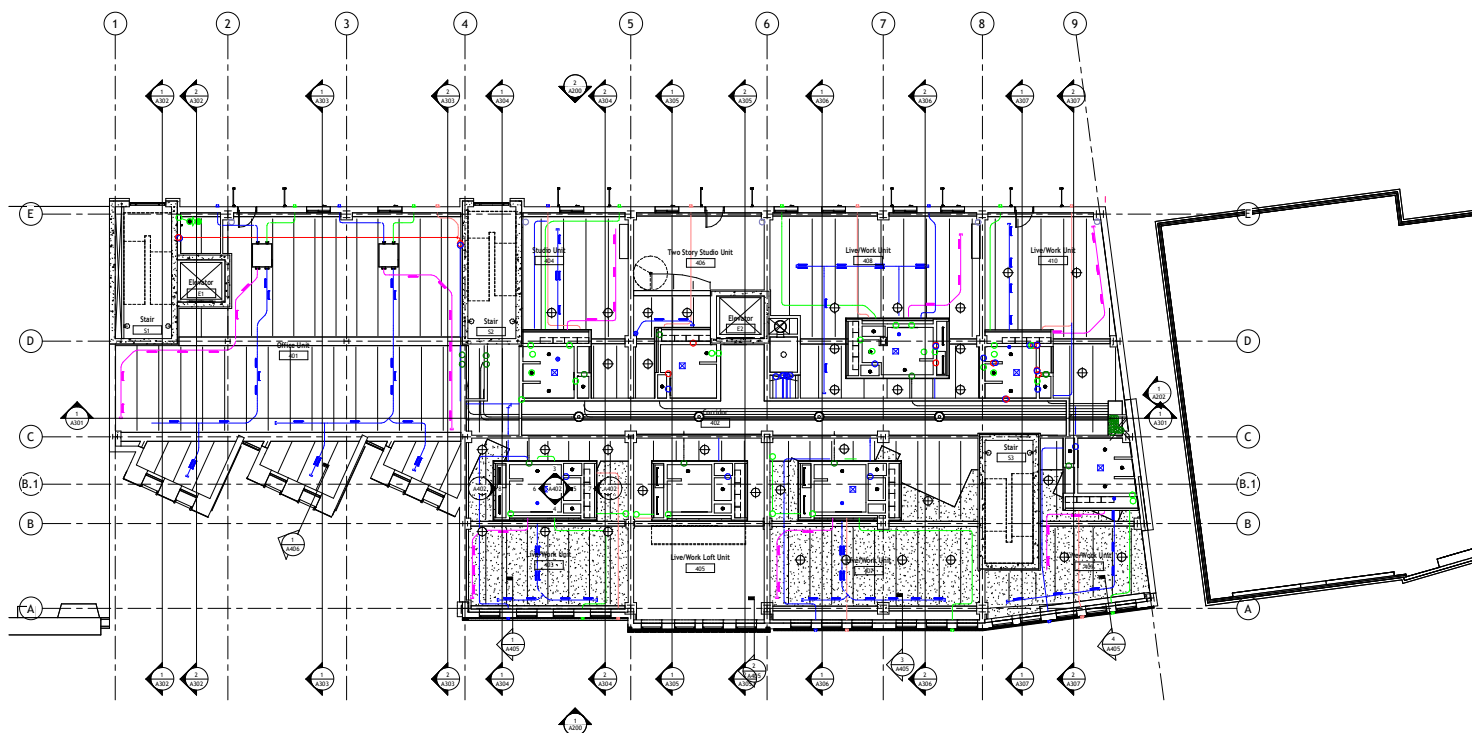
Dagny Taggart, LTD
Brownsville, PA 52872

Designing Trends
103B Broadway
Knoxville, TN 36664-2084

[illegible]

Project Number	7765328-33-A
Date	6/1/2023
Drawn By	APF
Checked By	ADSK

Scale $1/8" = 1'-0"$

[illegible]

NOT FOR CONSTRUCTION



Architectural Design:
Etienne Oiseau, LLC
Detroit, MI 96435

Structural Design and Modeling:
Safe Harbor Engineering, PC
11 Eleventh Street, Suite 11
Purchasing Decisions, NO 13131-1525

MEP Design and Modeling:
Droffats Consulting Services, LLC
Los Angeles, CA 78383

Civil Engineering:
Rubicon Engineering Solutions, INC
Pittsburgh, PA 77462-5247

Dagny Taggart, LTD
Brownsville, PA 52872

Commercial Kitchen Design:
Designing Trends
103B Broadway
Knoxville, TN 36664-2084

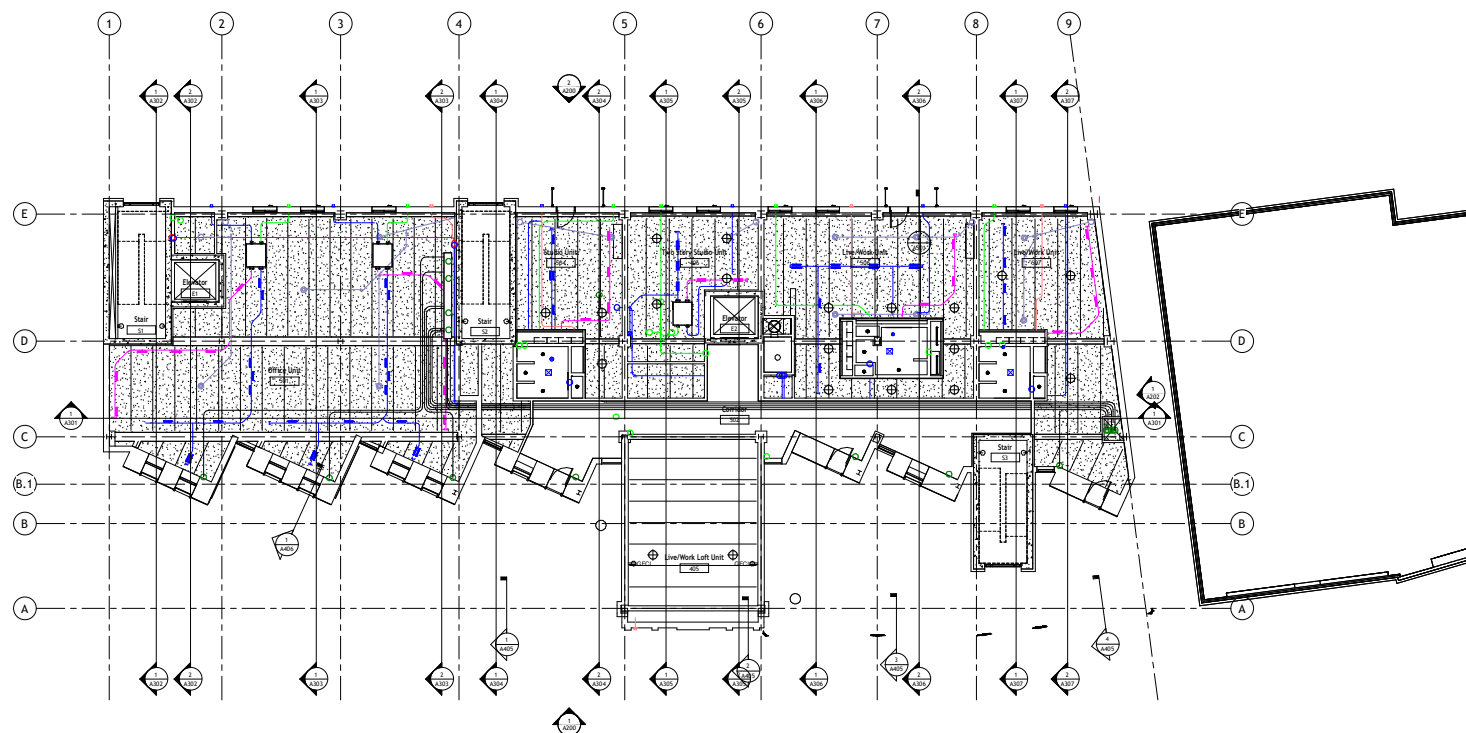
[illegible]

Snowdon Towers
Fifth Floor Ceiling Plan

Project Number	7765328-33-A
Date	6/1/2023
Drawn By	APF
Checked By	ADSK

A112

Scale $1/8" = 1'-0"$



NOT FOR CONSTRUCTION



Cartesian Inverse, PA
Chicago, IL 28246

Etienne Oiseau, LLC
Detroit, MI 96435

Safe Harbor Engineering, PC
11 Eleventh Street, Suite 11
Purchasing Decisions, NO 13131-1525

Droffats Consulting Services, LLC
Los Angeles, CA 78383

Rubicon Engineering Solutions, INC
Pittsburgh, PA 77462-5247

Dagny Taggart, LTD
Brownsville, PA 52872

Designing Trends
103B Broadway
Knoxville, TN 36664-2084

[illegible]

Existing Conditions Elevations

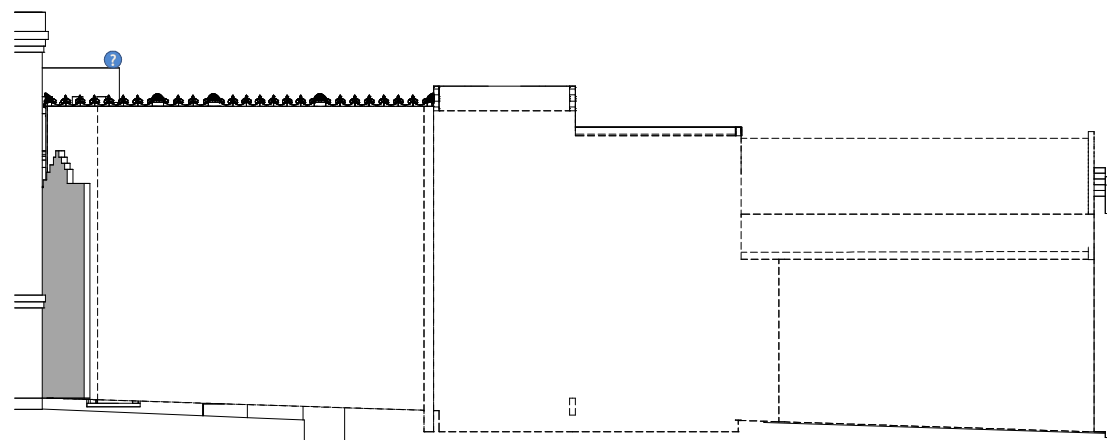
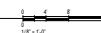
Date 6/1/2023

Checked By	ADSK
------------	------

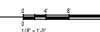
Scale $1/8" = 1'-0"$

[illegible]

1 Existing Conditions - South Elevation
1/8" = 1'-0"



② Existing Conditions - North Elevation
1/8" = 1'-0"



NOT FOR CONSTRUCTION



Architectural Design:

Structural Design and Modeling:

MEP Design and Modeling:

Civil Engineering:

Landscape Architecture & Community Planning

Commercial Kitchen Design:

[illegible]

Snowdon Towers
Building Elevations

Project Number	7705520-55-A
Date	6/11/2022

Drawn by	APF
Checked By	APC

Checked by	ADSK
------------	------

Scale 1/8" = 1' 0"

11/14/2025 2:19:53 PM





Architectural Design:
Etienne Oiseau, LLC
Detroit, MI 96435

Structural Design and Modeling:
Safe Harbor Engineering, PC
11 Eleventh Street, Suite 11
Purchasing Decisions, NO 13131-1525

MEP Design and Modeling:
Droffats Consulting Services, LLC
Los Angeles, CA 78383

Civil Engineering:
Rubicon Engineering Solutions, INC
Pittsburgh, PA 77462-5247

Dagny Taggart, LTD
Brownsville, PA 52872

Designing Trends
103B Broadway
Knoxville, TN 36664-2084

[illegible]

Snowdon Towers
Building Elevations

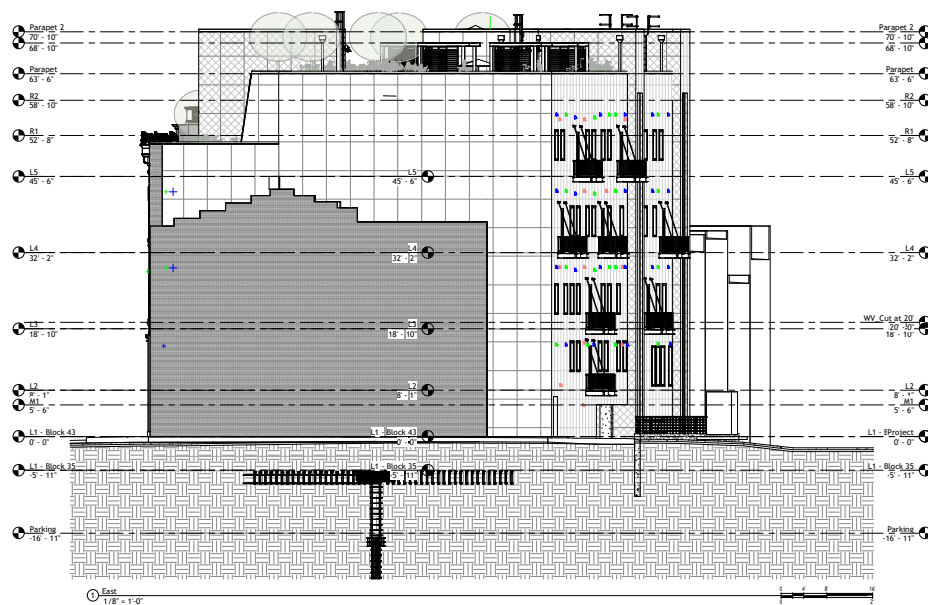
Project Number:	7705520-55-A
Date:	6/1/2023

Checked By	ADSK
------------	------

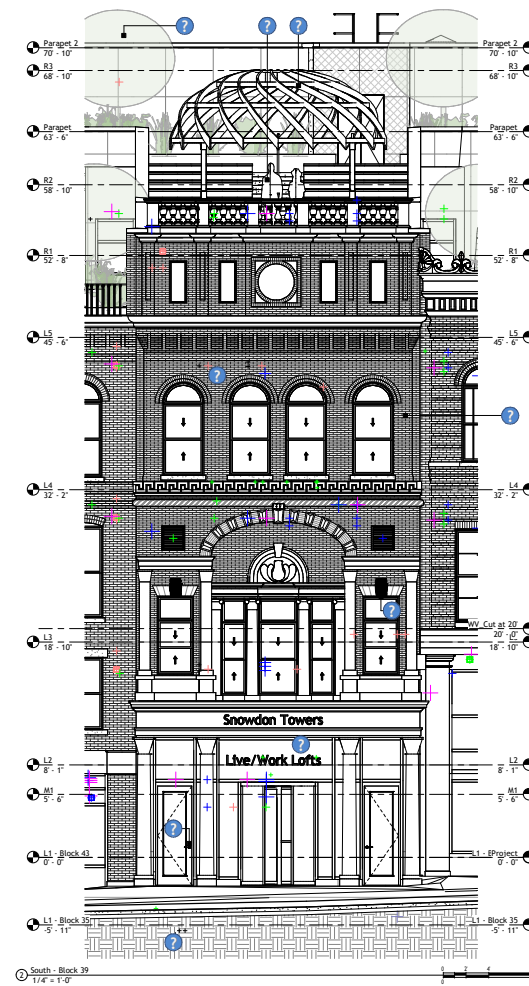
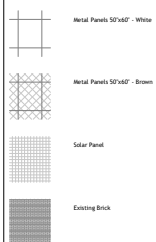
1000

A202

Scale	As indicated
-------	--------------



Wall Material Legend



NOT FOR CONSTRUCTION



Cartesian Inverse, PA
Chicago, IL 28246

Etienne Oiseau, LLC
Detroit, MI 96435

Safe Harbor Engineering, PC
11 Eleventh Street, Suite 11
Purchasing Decisions, NO 13131-1525

Droffats Consulting Services, LLC
Los Angeles, CA 78383

Rubicon Engineering Solutions, INC
Pittsburgh, PA 77462-5247

Dagny Taggart, LTD
Brownsville, PA 52872

Designing Trends
103B Broadway
Knoxville, TN 36664-2084

[illegible]

Snowdon Towers
Building Sections

Date	6/1/2023
------	----------

Checked By	ADSK
------------	------

A301

Scale $1/8" = 1'-0"$

NOT FOR CONSTRUCTION

11/14/2025 2:20:29 PM



Cartesian Inverse, PA
Chicago, IL 28246

Etienne Oiseau, LLC
Detroit, MI 96435

Safe Harbor Engineering, PC
11 Eleventh Street, Suite 11
Purchasing Decisions, NO 13131-1525

Droffats Consulting Services, LLC
Los Angeles, CA 78383

Rubicon Engineering Solutions, INC
Pittsburgh, PA 77462-5247

Dagny Taggart, LTD
Brownsville, PA 52872

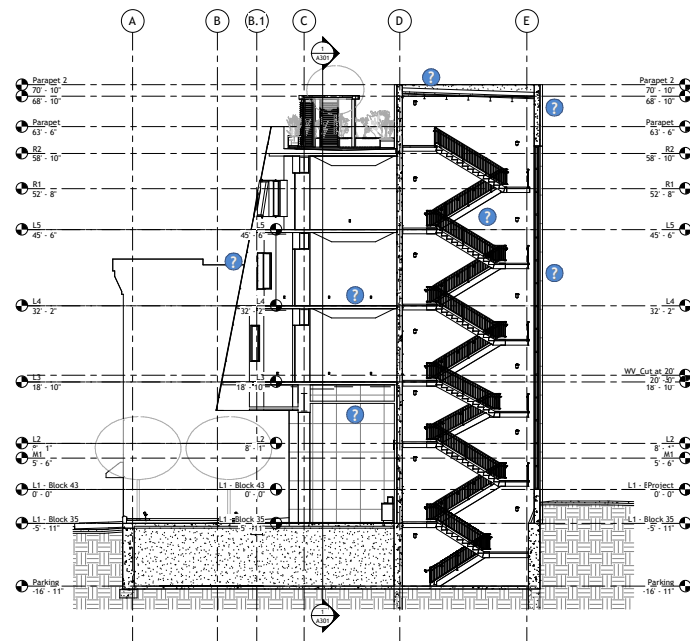
Designing Trends
103B Broadway
Knoxville, TN 36664-2084

[illegible]

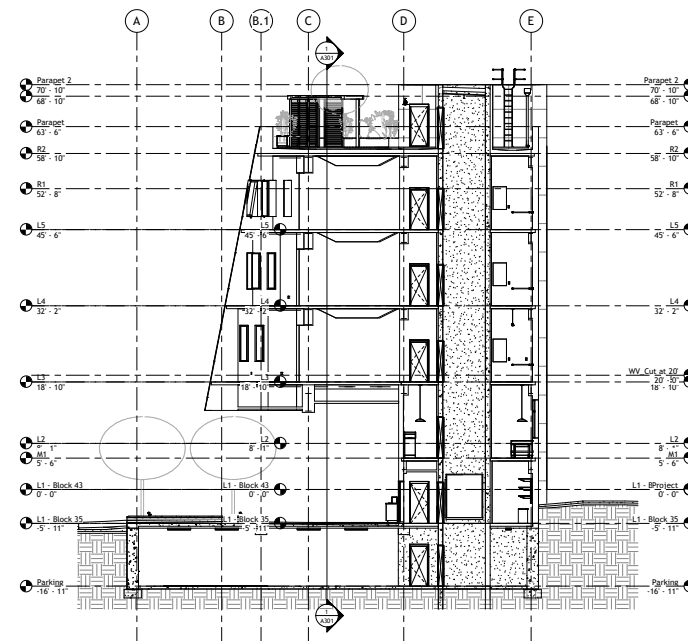
Snowdon Towers
Building Sections

Checked By	ADSK
------------	------

A302

Scale $1/8" = 1'-0"$ [illegible]

① Transverse Section - Stair 1
1/8" = 1'-0"



② Transverse Section - Elevator 1
1/8" = 1'-0"

NOT FOR CONSTRUCTION



Cartesian Inverse, PA
Chicago, IL 28246

Etienne Oiseau, LLC
Detroit, MI 96435

Safe Harbor Engineering, PC
11 Eleventh Street, Suite 11
Purchasing Decisions: NO 13131-1525

Droffats Consulting Services, LLC
Los Angeles, CA 78383

Rubicon Engineering Solutions, INC
Pittsburgh, PA 77462-5247

Dagny Taggart, LTD
Brownsville, PA 52872

Designing Trends
103B Broadway
Knoxville, TN 36664-2084

[illegible]

Snowdon Towers
Building Sections

Date	6/1/2023
------	----------

Checked By	ADSK
------------	------

A303

Scale $1/8" = 1'-0"$

[illegible]

NOT FOR CONSTRUCTION



Cartesian Inverse, PA
Chicago, IL 28246

Etienne Oiseau, LLC
Detroit, MI 96435

Safe Harbor Engineering, PC
11 Eleventh Street, Suite 11
Purchasing Decisions: NO 13131-1525

Droffats Consulting Services, LLC
Los Angeles, CA 78383

Rubicon Engineering Solutions, INC
Pittsburgh, PA 77462-5247

Dagny Taggart, LTD
Brownsville, PA 52872

Designing Trends
103B Broadway
Knoxville, TN 36664-2084

[illegible]

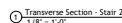
Snowdon Towers
Building Sections

Project Number:	7705520-55-A
Date:	6/1/2023

Checked By	ADSK
------------	------

A304

Scale $1/8" = 1'-0"$

[illegible]

NOT FOR CONSTRUCTION



Cartesian Inverse, PA
Chicago, IL 28246

Etienne Oiseau, LLC
Detroit, MI 96435

Safe Harbor Engineering, PC
11 Eleventh Street, Suite 11
Purchasing Decisions, NO 13131-1525

Droffats Consulting Services, LLC
Los Angeles, CA 78383

Rubicon Engineering Solutions, INC
Pittsburgh, PA 77462-5247

Dagny Taggart, LTD
Brownsville, PA 52872

Designing Trends
103B Broadway
Knoxville, TN 36664-2084

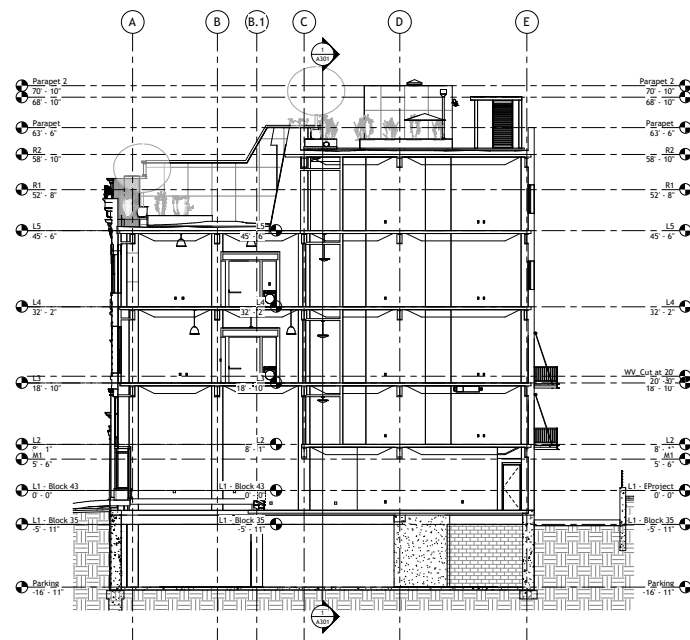
[illegible]

Snowdon Towers
Building Sections

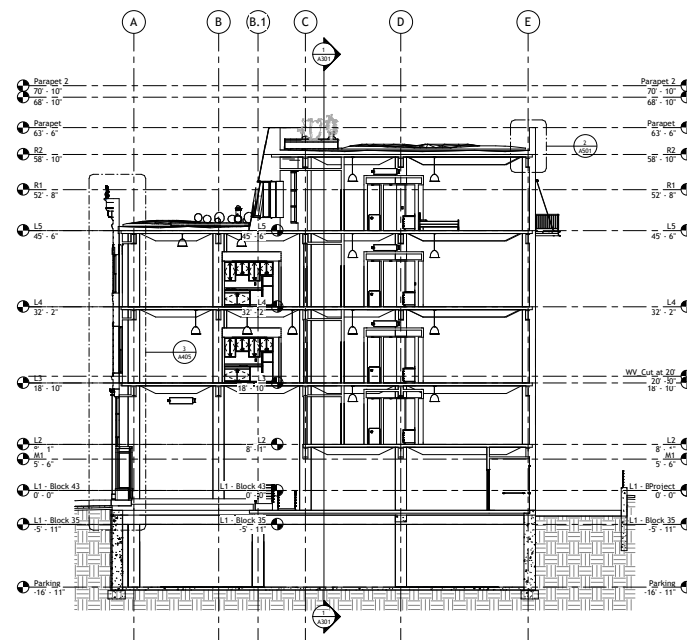
Date	6/1/2023
------	----------

Checked By	ADSK
------------	------

Scale $1/8" = 1'-0"$



① Transverse Section - Retail/Residential - Grid 7
1/8" = 1'-0"



② Transverse Section - Retail/Residential - Grid 8
1/8" = 1'-0"

NOT FOR CONSTRUCTION

4/14/2025 2:30:58 PM



Cartesian Inverse, PA
Chicago, IL 28246

Etienne Oiseau, LLC
Detroit, MI 96435

Safe Harbor Engineering, PC
11 Eleventh Street, Suite 11
Purchasing Decisions: NO 13131-1525

Droffats Consulting Services, LLC
Los Angeles, CA 78383

Rubicon Engineering Solutions, INC
Pittsburgh, PA 77462-5247

Dagny Taggart, LTD
Brownsville, PA 52872

Designing Trends
103B Broadway
Knoxville, TN 36664-2084

[illegible]

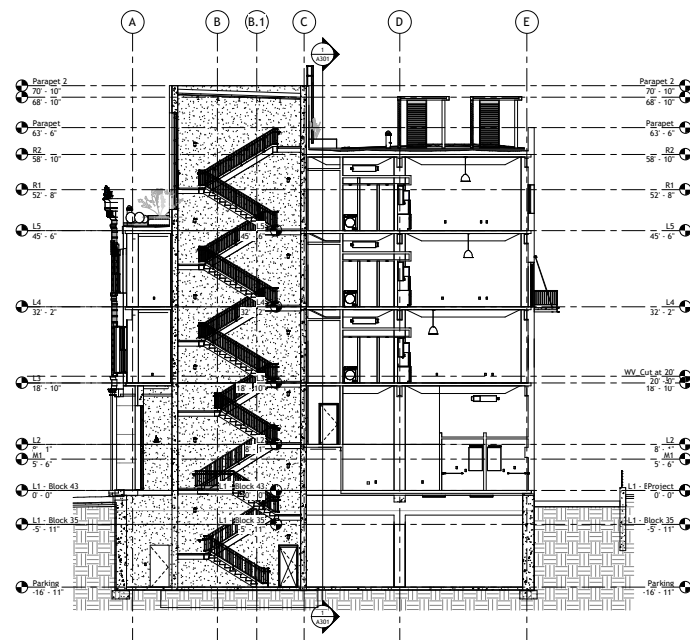
Snowdon Towers
Building Sections

Date	6/1/2023
------	----------

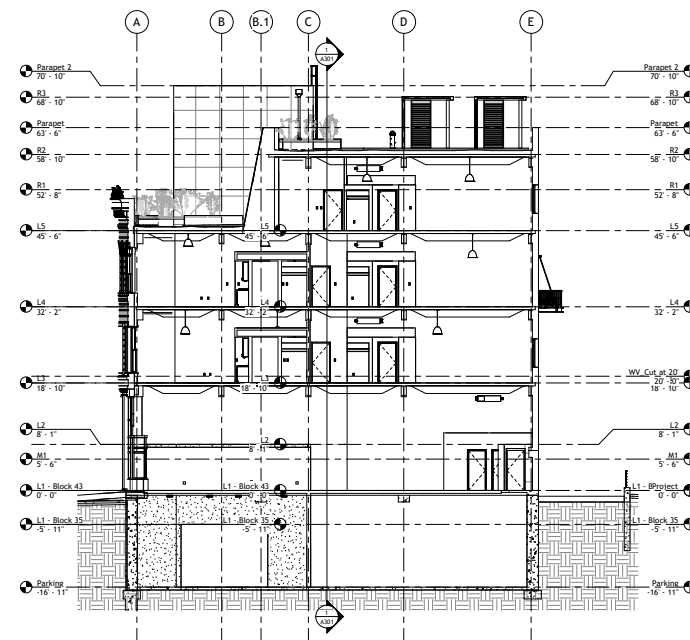
Checked By	ADSK
------------	------

A307

Scale $1/8" = 1'-0"$

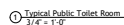


① Transverse Section - Stair 3
1/8" = 1'-0"



② Transverse Section - Retail/Residential - Grid 9
1/8" = 1'-0"

NOT FOR CONSTRUCTION



Architectural Design:
Etienne Oiseau, LLC
Detroit, MI 96435

Structural Design and Modeling:
Safe Harbor Engineering, PC
11 Eleventh Street, Suite 11
Purchasing Decisions, NO 13131-1525

MEP Design and Modeling:
Droffats Consulting Services, LLC
Los Angeles, CA 78383

Civil Engineering:
Rubicon Engineering Solutions, INC
Pittsburgh, PA 77462-5247

Dagny Taggart, LTD
Brownsville, PA 52872

Commercial Kitchen Design:
Designing Trends
 103B Broadway
 Knoxville, TN 36664-2084

Autodesk

Snowdon Towers

Typical Public Restroom

Project Number	7765328-33-A
----------------	--------------

Project Number	7705528-55-A
Date	6/1/2023

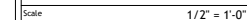
Drawn By	APF
----------	-----

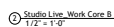
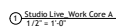
Checked By	ADSK
------------	------

A401

Scale $3/4" = 1'-0"$

NOT FOR CONSTRUCTION





Project Management & Architectural Modeling:

Cartesian Inverse, PA
Chicago, IL 28246

Architectural Design:

Etienne Oiseau, LLC
Detroit, MI 96435

Structural Design and Modeling:

Safe Harbor Engineering, PC
11 Eleventh Street, Suite 11
Purchasing Decisions, NO 13131-1525

MEP Design and Modeling:

Droffats Consulting Services, LLC
Los Angeles, CA 78383

Civil Engineering:

Rubicon Engineering Solutions, INC
Pittsburgh, PA 77462-5247

Landscape Architecture & Community Planning:

Dagny Taggart, LTD
Brownsville, PA 52872

Commercial Kitchen Design:

Designing Trends
103B Broadway
Knoxville, TN 36664-2084

Autodesk

Snowdon Towers

Enlarged Live/Work Cores

Project Number	7765328-33-A
----------------	--------------

Project Number	7765328-33-A
Date	6/1/2023

Date	6/17/2023
Drawn By	APF

Checked By	ADSK
------------	------

A403

Scale $1/2" = 1'-0"$

4/14/2025 2:24:15 PM

NOT FOR CONSTRUCTION

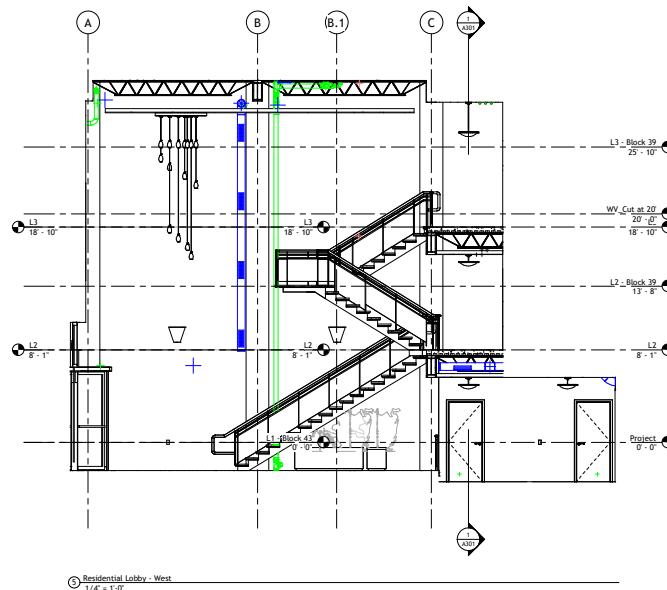
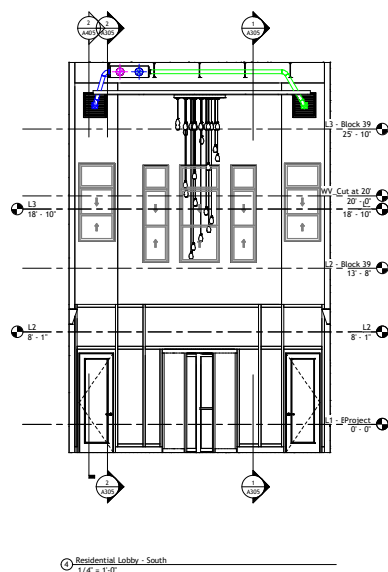
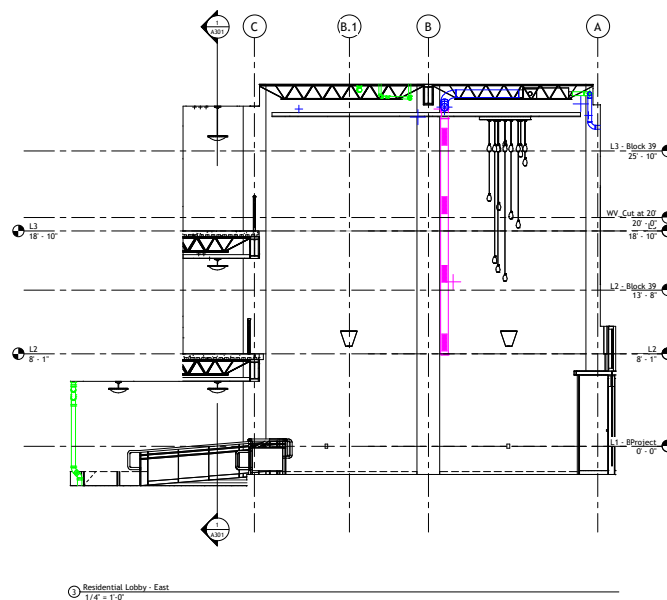
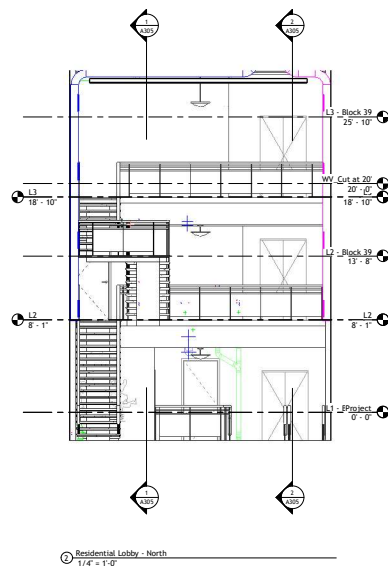
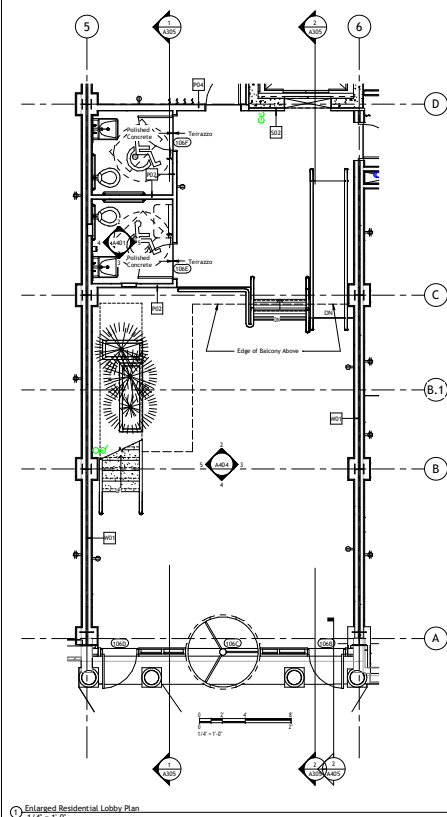


Commercial Kitchen Design:
Designing Trends
103B Broadway
Knoxville, TN 36664-2084

[illegible]

Project Number	7765328-33-A
Date	6/1/2023
Drawn By	APF
Checked By	ADSK
A404	
Scale	1/4" = 1'-0"

2025/01/14/2025 2:24:24 PM





Architectural Design:
Etienne Oiseau, LLC
Detroit, MI 96435

Structural Design and Modeling:
Safe Harbor Engineering, PC
11 Eleventh Street, Suite 11
Purchasing Decisions, NO 13131-1525

MEP Design and Modeling:
Droffats Consulting Services, LLC
Los Angeles, CA 78383

Civil Engineering:
Rubicon Engineering Solutions, INC
Pittsburgh, PA 77462-5247

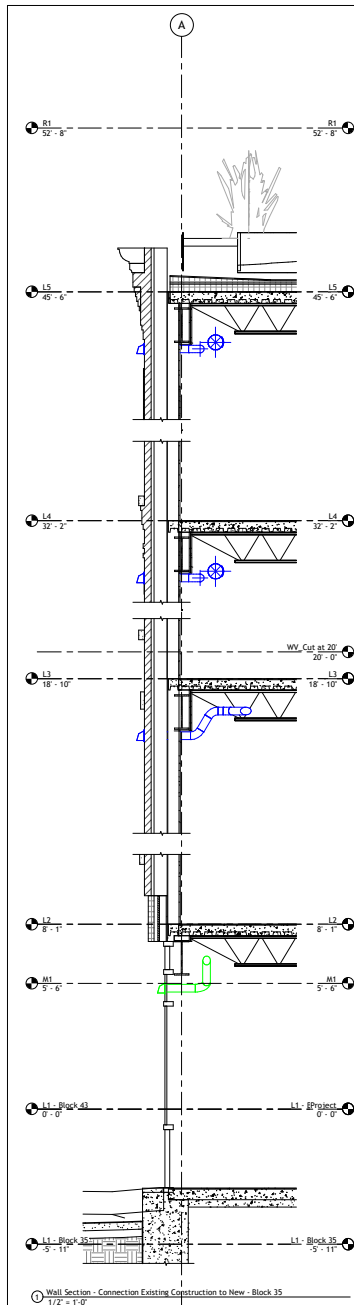
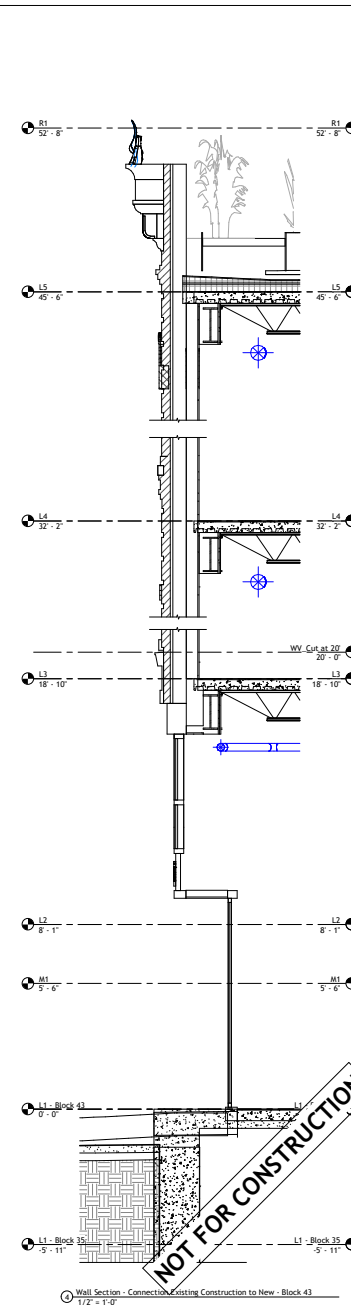
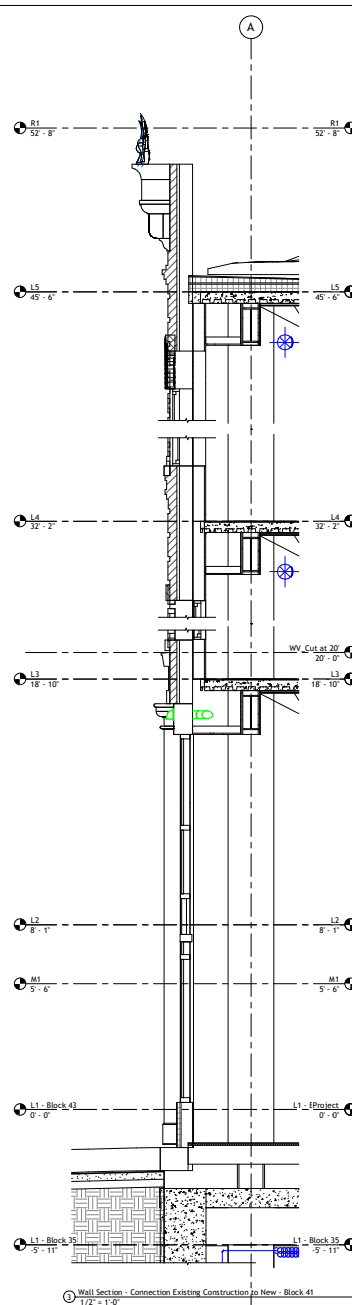
Dagny Taggart, LTD
Brownsville, PA 52872

Commercial Kitchen Design:
Designing Trends
103B Broadway
Knoxville, TN 36664-2084

[illegible]

Autodesk
Snowdon Towers
Wall Sections

Project Number	7765328-33-A
Date	6/1/2023
Drawn By	APF
Checked By	ADSK
A405	
Scale	1/2" = 1'-0"

[illegible]



www.autodesk.com/revit

Project Management & Architectural Modeling:
Cartesian Inverse, PA
Chicago, IL 28246

Architectural Design:
Etienne Oiseau, LLC
Detroit, MI 96435

Structural Design and Modeling:
Safe Harbor Engineering, PC
11 Eleventh Street, Suite 11
Purchasing Decisions, NO 13131-1525

MEP Design and Modeling:
Droffats Consulting Services, LLC
Los Angeles, CA 78383

Civil Engineering:
Rubicon Engineering Solutions, INC
Pittsburgh, PA 77462-5247

Dagny Taggart, LTD
Brownsville, PA 52872

Designing Trends
103B Broadway
Knoxville, TN 36664-2084

[illegible]

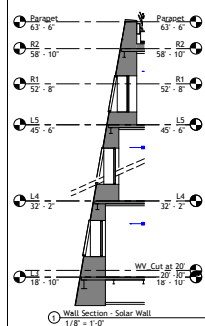
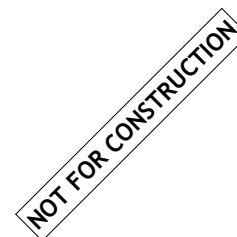
Autodesk

Snowdon Towers
Wall Sections

Project Number	7765328-33-A
Date	6/1/2023
Drawn By	APF
Checked By	ADSK

A406

Scale $1/8" = 1'-0"$

[illegible]



Architectural Design:
Etienne Oiseau, LLC
Detroit, MI 96435

Structural Design and Modeling:
Safe Harbor Engineering, PC
11 Eleventh Street, Suite 11
Purchasing Decisions, NO 13131-1525

MEP Design and Modeling:
Droffats Consulting Services, LLC
Los Angeles, CA 78383

Civil Engineering:
Rubicon Engineering Solutions, INC
Pittsburgh, PA 77462-5247

Dagny Taggart, LTD
Brownsville, PA 52872

Designing Trends
103B Broadway
Knoxville, TN 36664-2084

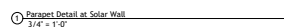
[illegible]

Autodesk
Snowdon Towers
Details

AF04

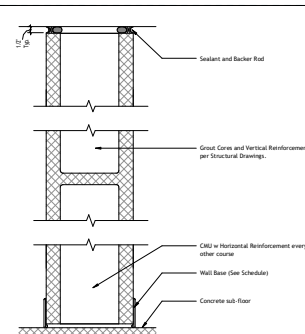
A501

Scale As indicated

[illegible]

Painted to Match Panels

NOT FOR CONSTRUCTION



Partition Type - CMU

Type	CMU Size	Rating	Notes
P01	7 5/8"	2 HR	--



Cartesian Inverse, PA
Chicago, IL 28246

Etienne Oiseau, LLC
Detroit, MI 96435

Safe Harbor Engineering, PC
11 Eleventh Street, Suite 11
Purchasing Decisions, NO 13131-1525

Droffats Consulting Services, LLC
Los Angeles, CA 78383

Rubicon Engineering Solutions, INC
Pittsburgh, PA 77462-5247

Dagny Taggart, LTD
Brownsville, PA 52872

Designing Trends
103B Broadway
Knoxville, TN 36664-2084

[illegible]

Partition Types

Project Number	7705520-55-A
Date	6/1/2022

Drawn by	APF
Checked By	ADCK

A502

A502

Scale $3'' = 1'-0''$

Door Types



Project Management & Architectural Modeling:
Cartesian Inverse, PA
Chicago, IL 28246

Architectural Design:
Etienne Oiseau, LLC
Detroit, MI 96435

Safe Harbor Engineering, PC
11 Eleventh Street, Suite 11
Purchasing Decisions, NO 13131-1525

MEP Design and Modeling:
Droffats Consulting Services, LLC
Los Angeles, CA 78383

Civil Engineering:
Rubicon Engineering Solutions, INC
Pittsburgh, PA 77462-5247

Landscape Architecture & Community Planning:
Dagny Taggart, LTD
Brownsville, PA 52872

Commercial Kitchen Design:
Designing Trends
103B Broadway
Knoxville, TN 36664-2084

[illegible]

Autodesk
Snowdon Towers
Door Schedule

Project Number	7765328-33-A
Date	6/1/2023
Drawn By	APF
Checked By	ADSK

A601

11/14/2025 2:21:38 PM

NOT FOR CONSTRUCTION



Cartesian Inverse, PA
Chicago, IL 28246

Etienne Oiseau, LLC
Detroit, MI 96435

Safe Harbor Engineering, PC
11 Eleventh Street, Suite 11
Purchasing Decisions: NO 13131-1525

Droffats Consulting Services, LLC
Los Angeles, CA 78383

Rubicon Engineering Solutions, INC
Pittsburgh, PA 77462-5247

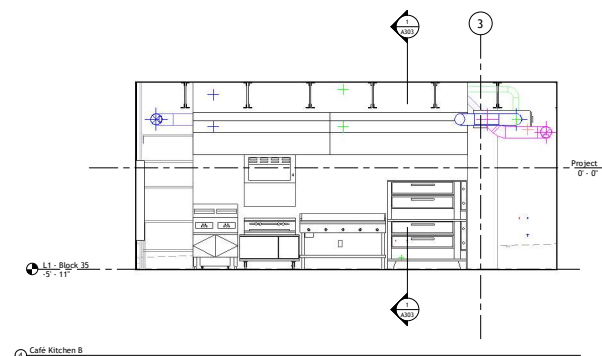
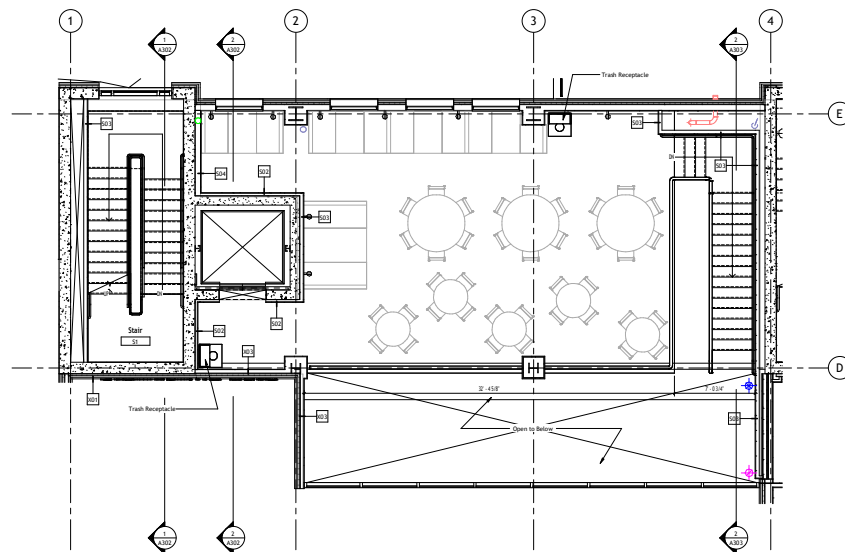
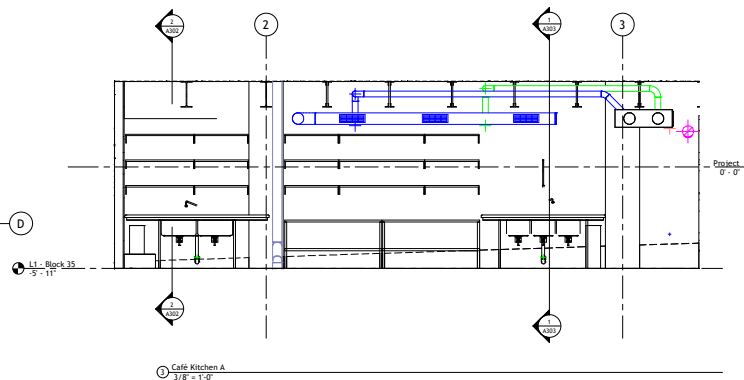
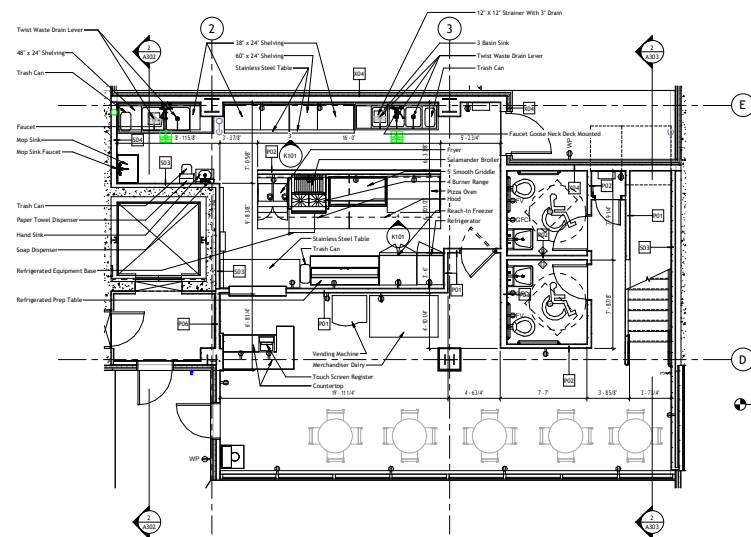
Dagny Taggart, LTD
Brownsville, PA 52872

Designing Trends
103B Broadway
Knoxville, TN 36664-2084

[illegible]

Scale	
-------	--

11/14/2025 2:27:49 PM



www.autodesk.com/revit

Project Management & Architectural Modeling:

Cartesian Inverse, PA
Chicago, IL 28246

Architectural Design:

Etienne Oiseau, LLC
Detroit, MI 96435

Structural Design and Modeling:

Safe Harbor Engineering, PC
11 Eleventh Street, Suite 11
Purchasing Decisions, NO 13131-1525

MEP Design and Modeling:

Droffats Consulting Services, LLC
Los Angeles, CA 78383

Civil Engineering:

Rubicon Engineering Solutions, INC.
Pittsburgh, PA 77462-5247

Landscape Architecture & Community Planning:

Dagny Taggart, LTD
Brownsville, PA 52872

Commercial Kitchen Design:

Designing Trends
103B Broadway
Knoxville, TN 36664-2084

[illegible]

Autodesk

Snowdon Towers

Café Kitchen

Project Number	7765328-33-A
----------------	--------------

Date	6/1/2023
------	----------

Drawn By	APF
----------	-----

Checked By	ADSK
------------	------

K101

Scale	As indicated
-------	--------------

4/14/2025 2:27:57 PM



www.autodesk.com/revit

Project Management & Architectural Modeling:
Cartesian Inverse, PA
Chicago, IL 28246

Architectural Design:
Etienne Oiseau, LLC
Detroit, MI 96435

Structural Design and Modeling:
Safe Harbor Engineering, PC
11 Eleventh Street, Suite 11
Purchasing Decisions, NO 13131-1525

MEP Design and Modeling:
Droffats Consulting Services, LLC
Los Angeles, CA 78383

Civil Engineering:
Rubicon Engineering Solutions, INC
Pittsburgh, PA 77462-5247

Dagny Taggart, LTD
Brownsville, PA 52872

Commercial Kitchen Design:
Designing Trends
103B Broadway
Knoxville, TN 36664-2084

NOT FOR CONSTRUCTION

Autodesk

Snowdon Towers

Parking Deck Floor Plan

Project Number	7765328.33-A
----------------	--------------

Project Number	7765328-33-A
Date	6/1/2023

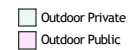
Date	6/1/2023
Drawn By	Author

Checked By	Author
Checked By	Checker

SD100

Scale $1/8" = 1'-0"$

11/14/2025 2:28:13 PM



Project Management & Architectural Modeling:
Cartesian Inverse, PA
Chicago, IL 28246

Architectural Design:
Etienne Oiseau, LLC
Detroit, MI 96435

Safe Harbor Engineering, PC
11 Eleventh Street, Suite 11
Purchasing Decisions, NO 13131-1525

MEP Design and Modeling:
Droffats Consulting Services, LLC
Los Angeles, CA 78383

Civil Engineering:
Rubicon Engineering Solutions, INC
Pittsburgh, PA 77462-5247

Landscape Architecture & Community Planning:
Dagny Taggart, LTD
Brownsville, PA 52872

Commercial Kitchen Design:
Designing Trends
103B Broadway
Knoxville, TN 36664-2084

Autodesk	
Snowdon Towers	
Roof Plan	
Project Number	7765328-33-A
Date	6/1/2023
Drawn By	Author
Checked By	Checker
SD106	
Scale	1/8" = 1'-0"

11/14/2025 2:28:22 PM